

CI/SIB

Vn8

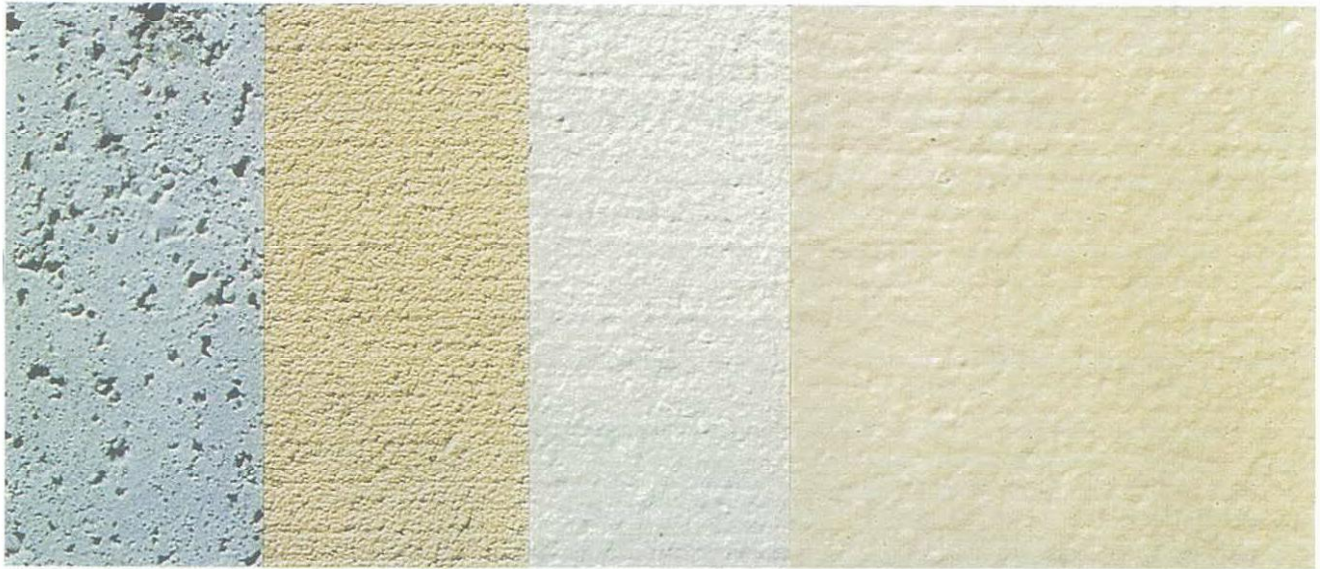
June 1993

Formwal Sealflex

Hitchins Applicator
Leaflet No. 6



Exterior Weatherproofing System



Bare block
layer build-up of the SEALFLEX coating, shown on concrete masonry

Primer/Filler

Body coat

Top coat



Porirua Court House waterproofed with SEALFLEX

Warranted Performance on New or Old Buildings

Please turn over for additional information

Sealflex ~ the facts...

- 1. What is it?** **Sealflex** is a high-build, flexible weatherproofing system providing a tough, elastic, decorative finish for exterior walls. Properly applied, **Sealflex** offers excellent tolerance to shrinkage cracking on new or existing surfaces.
 - 2. How is Sealflex applied?** In heavy liquid coats by spray/brush spray, brush or roller techniques. A thick coating is necessary for the best performance and is most easily gained by spraying.
 - 3. How many coats?** Three coats minimum. One primer or primer/filler, one body coat and one topcoat; all applied to full, even coverage. An extra coat of clear glaze is recommended for areas subject to dirt from "people contact".
 - 4. Can I apply it myself?** Not normally. To attain a high quality, warranted finish, Specialist Applicators are available to apply it.
 - 5. What can it be applied to?** Most building materials. Common use is onto concrete blocks, concrete and plaster render.
 - 6. How thick and flexible is it?** Approximately .8mm thickness must be obtained when dry, for proper performance. Anticipated moving joints or cracks must be caulked with **Formrok 28T** grey sealant.
 - 7. Does Sealflex hide uneven surfaces?** The normally smooth process does not have good masking properties. An extra light texturing coat improves "hiding power" where required.
 - 8. How long does it last?** Indefinitely with periodic cleaning and upgrading of the topcoat, as required.
 - 9. What colours are available?** Most British Standard Colours, plus black and white. Ask your Applicator for details.
 - 10. Is Sealflex guaranteed?** Yes. A specific Process Performance Warranty for ten years weatherproofness, and seven years life of the topcoat, is normally available, plus Applicators' workmanship warranties.
 - 11. Can it be re-painted?** If dirty, weathered or defaced in use, application of one or two coats of a compatible Hitchins product is recommended, after cleaning and preparation. A seven year cycle is anticipated but longer performance is possible. Warranties can be renewed on re-coat applications.
 - 12. How is it cleaned?** Hose and brush with water. Up to 0.5% by volume of neutral detergent can be added if necessary. Low pressure water blasting may be used. Solvent cleaners **should not** be used.
 - 13. Where can I see a Sealflex job?**
 - 14. How much does Sealflex cost?**
 - 15. How do I obtain advice, information and prices?**
- } CONTACT YOUR LOCAL APPROVED APPLICATOR!
- 16. What is a specialist Applicator?** A selected local company of building tradesmen of high repute. They are specially trained in **Sealflex** application, theory and technique.
 - 17. What other services do specialist Applicators provide?** As specialists in waterproofing and long term protection selected by the Hitchins Group, they provide a "Complete Service" for new or existing buildings. Hitchins Applicators work on roofs, gutters, parapets, walls, decks, ceilings, floors, pools, tanks; in residential, commercial or industrial situations.



Please contact your nearest
Hitchins's Offices

or
Your local
Specialist Applicator

Hitchins
Since 1932

7 Masefield Street
P.O. Box 40-749
Upper Hutt
New Zealand
Tel: 64-4-527 7248
Fax: 64-4-528 4813