



Roof
&
Deck
Accessories

Roof & Deck Accessories

This booklet has been created to provide you the customer and designer with an overview on the range of roof and deck accessories that Hitchins New Zealand Ltd market.

The range is extensive and growing as we search the world for accessories to service projects involving Index, CIM, Tufflex and Hitchins membranes. Currently we purchase from five suppliers and therefore we can provide you with a number of choices within every type of accessory.

These range from air vents, dropper drains, parapet outlets, over flows etc all in a range of sizes, plus fixed pavers support, adjustable types, deck tile pavers and wood panels etc, bird protection, expansion joint tapes fasteners and of course tools.

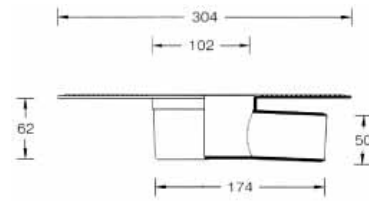
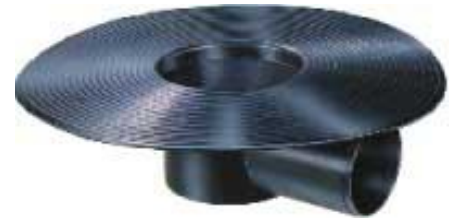
Again the range is extensive and will be added to over the years. This booklet introduces you to them, provide dimensions and codes.

Not all of these products are held in stock but are available on order. For supply price, please refer to our current price list for the product in stock, its code and their purchase price.

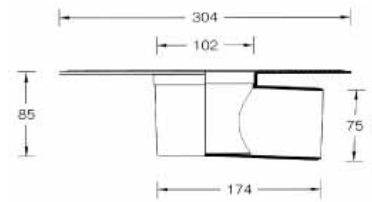
Droppers



Standard
D 01 & D 02



D 03
& D 04



Superior
D 05, 06, 07 & D 08



Superior Droppers

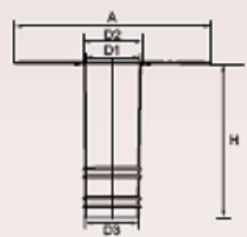
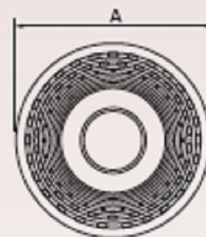
Code	Ø	A	D1	D2	D3	H	Per Carton
D 05	82	320	69	75	68	250	25
D 06	100	320	86	90	85	250	25
D 07	125	380	109	115	108	250	15
D 08	150	380	134	140	132	250	10

Standard Droppers

Code	Ø	A	D1	D2	D3	H	Per Carton
D 01	82	320	69	75	68	250	25
D 02	100	320	86	90	85	250	25

Side Discharge Drain

Code	Ø	A	D1	D2	D3	H	Per Carton
D 03	50	304	102		20		12
D 04	75	304	102		75		12



Note

Hitchins stock D 01, D 02, D 05 & D 06 at present in dimensions given. The others will be added.

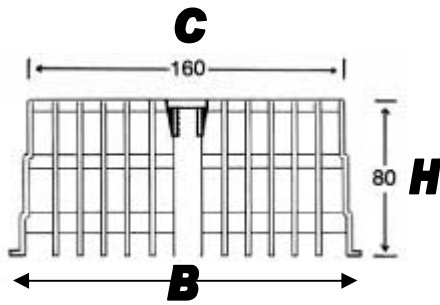
Also available but not stocked is a further range of diameters and length of flange.

"SURE FIX"



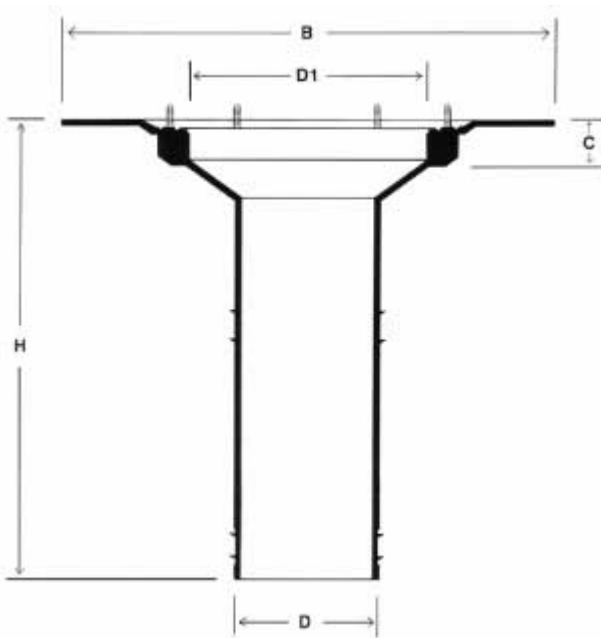
Code	B	H	D	D1	C	Per Carton
D 09	340	330	80	170	30	
D 10	340	330	100	170	30	
D 11	340	330	125	170	30	
D 12	340	330	150	170	30	

Surefix Droppers are a superior and popular drain which we carry stock of in sizes above.



LEAF GRATE and/or GRAVEL GRATE

D 13	
B	160
H	80
C	160

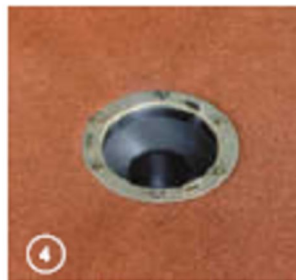
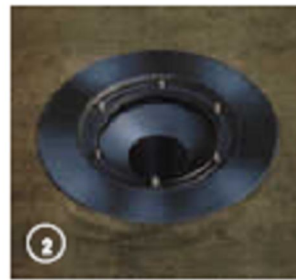


Installation Method

1. Install base sheet & cut out hole
2. Install the surefix drain.
3. Install capsheet, press over lugs, place ring on & cut out hole.
4. Install and screw fix ring.
5. Position and fasten the leaf gard.

INSTALLATION METHOD

BITUMINOUS MEMBRANES

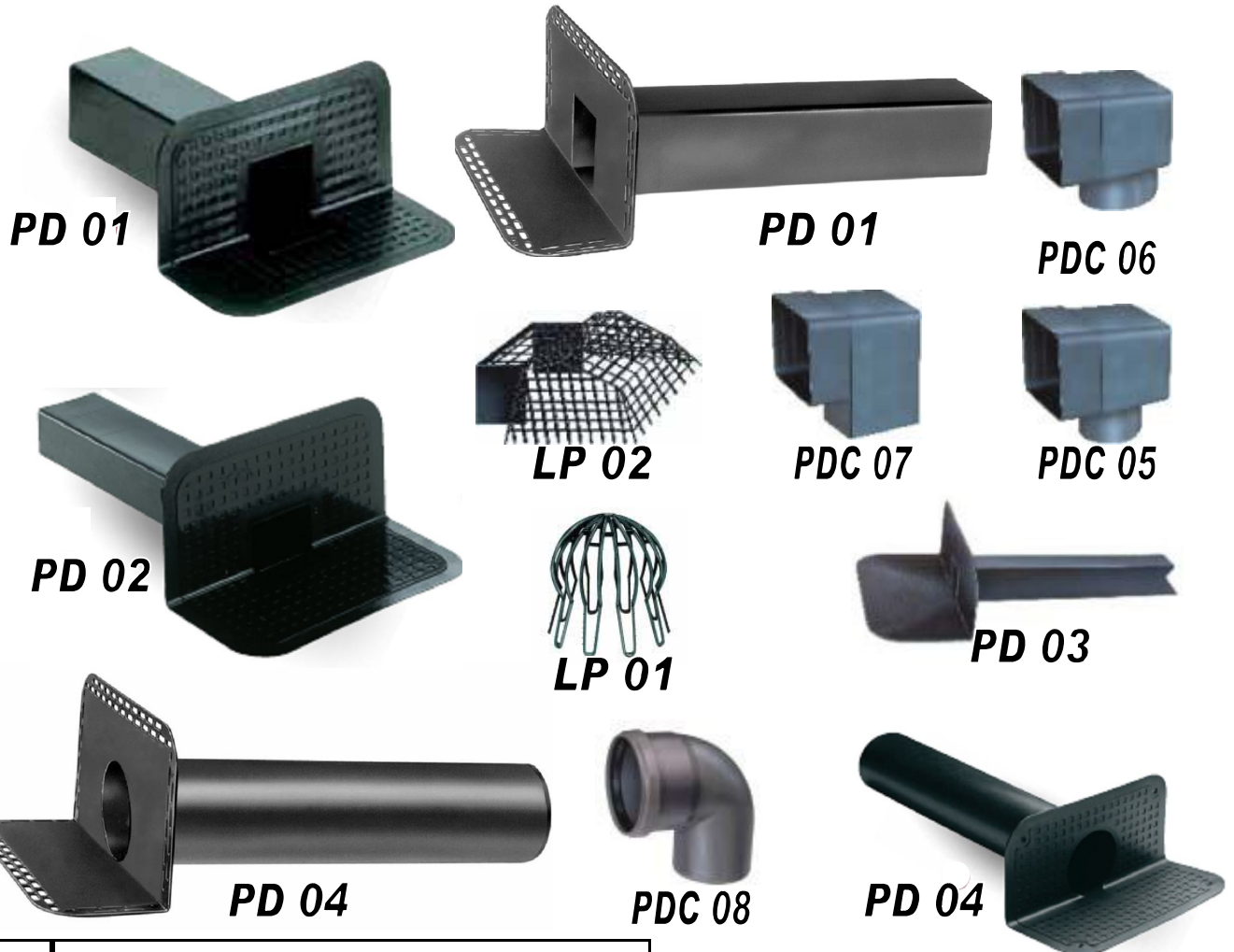


SYNTHETIC MEMBRANES

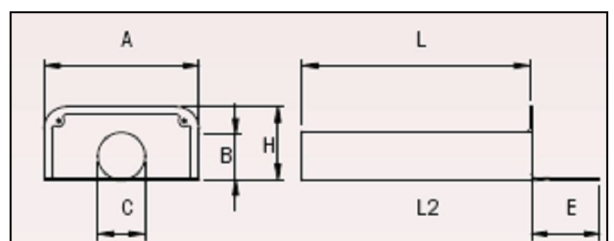
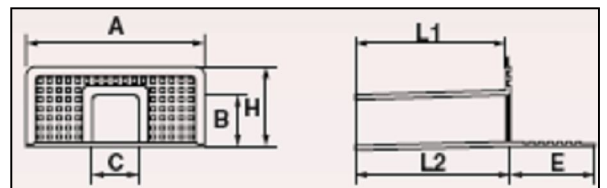


Parapete Drain Outlets

Box Type (Square & Rectangular)



Code No	A	B	C	E	H	L	Per Carton
PD 01	340	100	100	145	168	375	5
PD 02	340	62	100	145	168	425	10
PD 03	285	40	50	120	100	300	10
PD 04	340	100	100	150	165	500	8
PDC 05	Connector to 80mm Round						10
PDC 06	Connector to 100mm Round						10
PDC 07	Connector to 100mm Square						
PDC 08	Connector to 100mm Round						
LP 01	Leaf Guard Round						
LP 02	Leaf guard Rectangular						

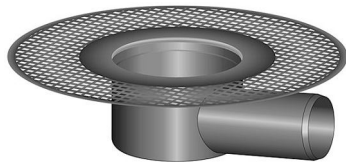
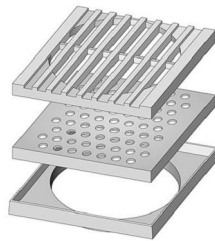


Note: Obtain Drainage necessary, check dimentions.

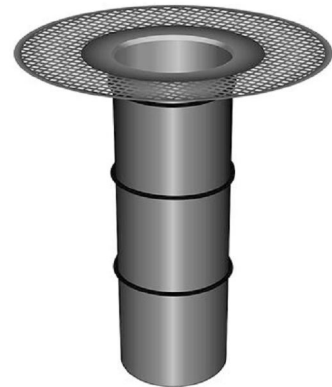
Liquid Membrane Parapet & Deck Drains

Grills

D 19 & D 20



Side dropper D 17 & D 18

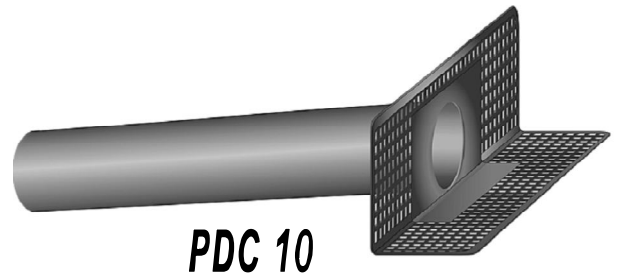


Dropper D 15 & D 16

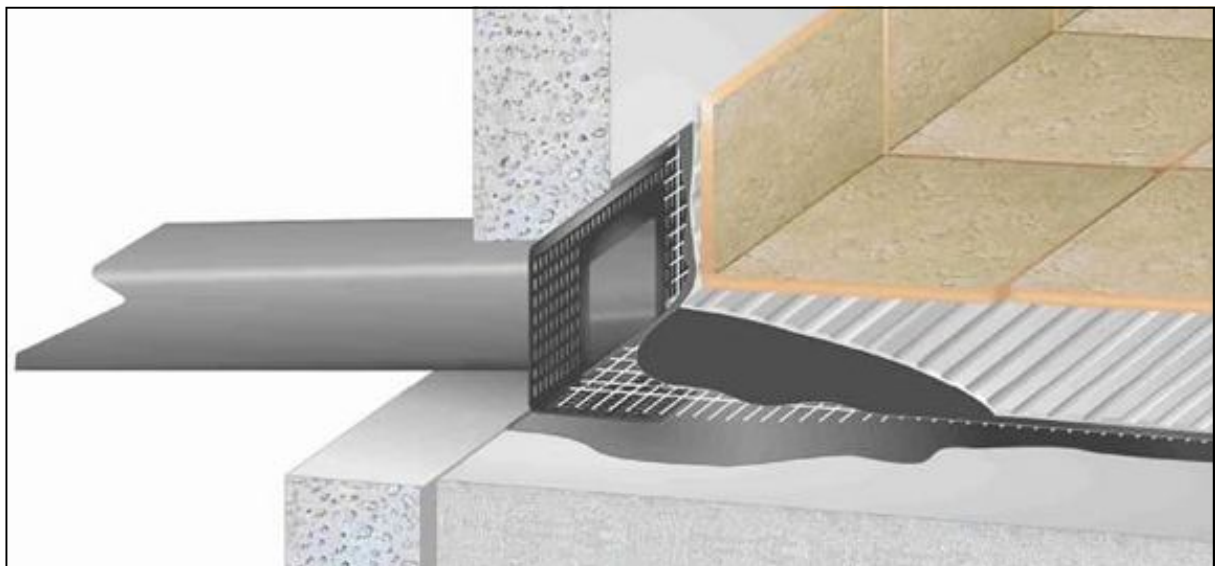
Parapet Drain Outlets



PDC 09



PDC 10



***Roof and deck drainage for liquid membranes such as
Hitchins Traffigard, Covercol AB Rapid, CIM, Tufflex.***

Airvents

1. Single Air vent
2. Inner section for Double Air vent
3. Collar for improved seal.



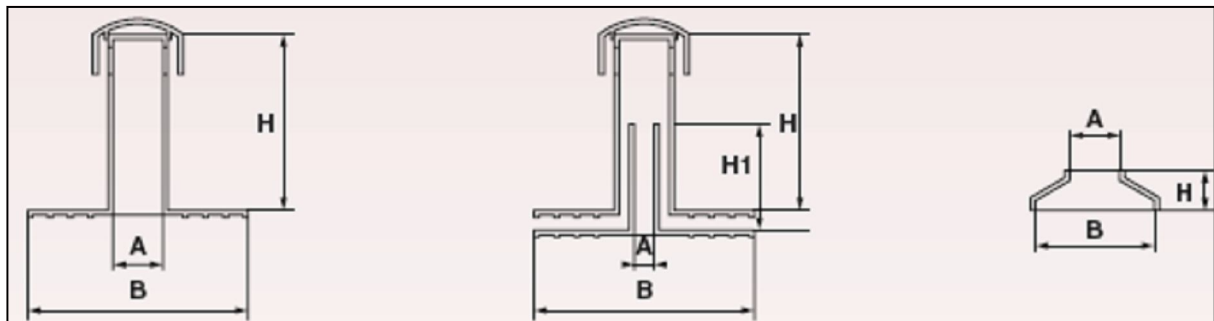
A 01



A 02



A 03



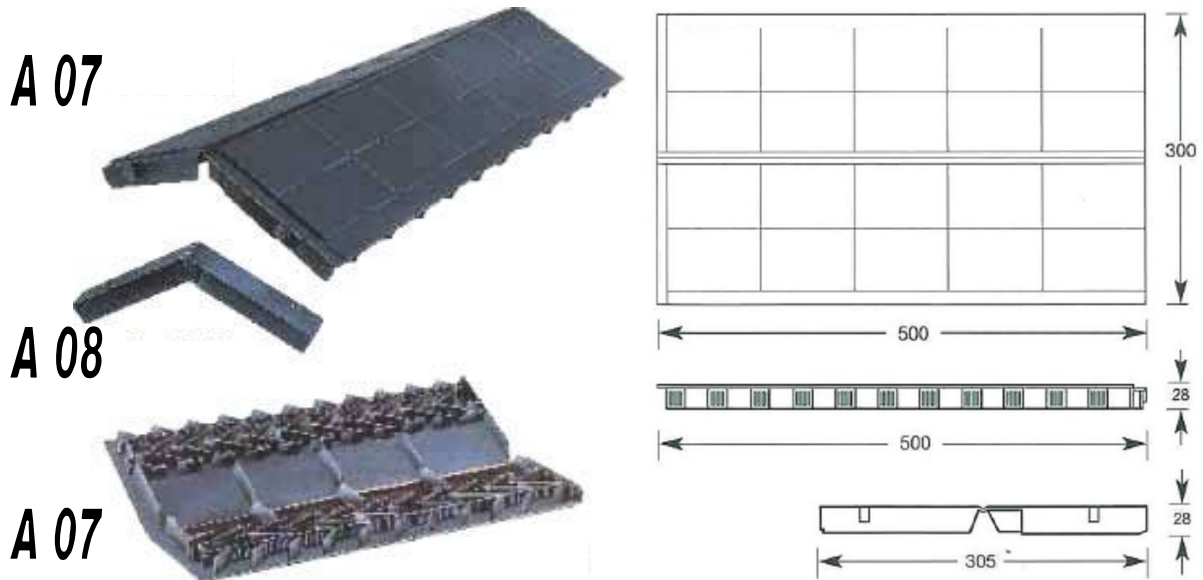
MAXI ROOF VENT 270mm H Ø 110

CODE	Type	Ø External	A	B	H	H1	Per Carton
A 01	1 Single Roof Vent	110	100	320	270	-	20
A 02	2 Double Roof Vent	110	60	300	270	190	20
A 03	3 Protection Collar	-	105	205	60	-	20

Note

These are commonly called mushroom type air vents. This new type single air vent allows greater air flow. The inner section for double air vent used on insulation roof systems. The collar provides improved flashing seal to air vent.

Ventilated Ridge

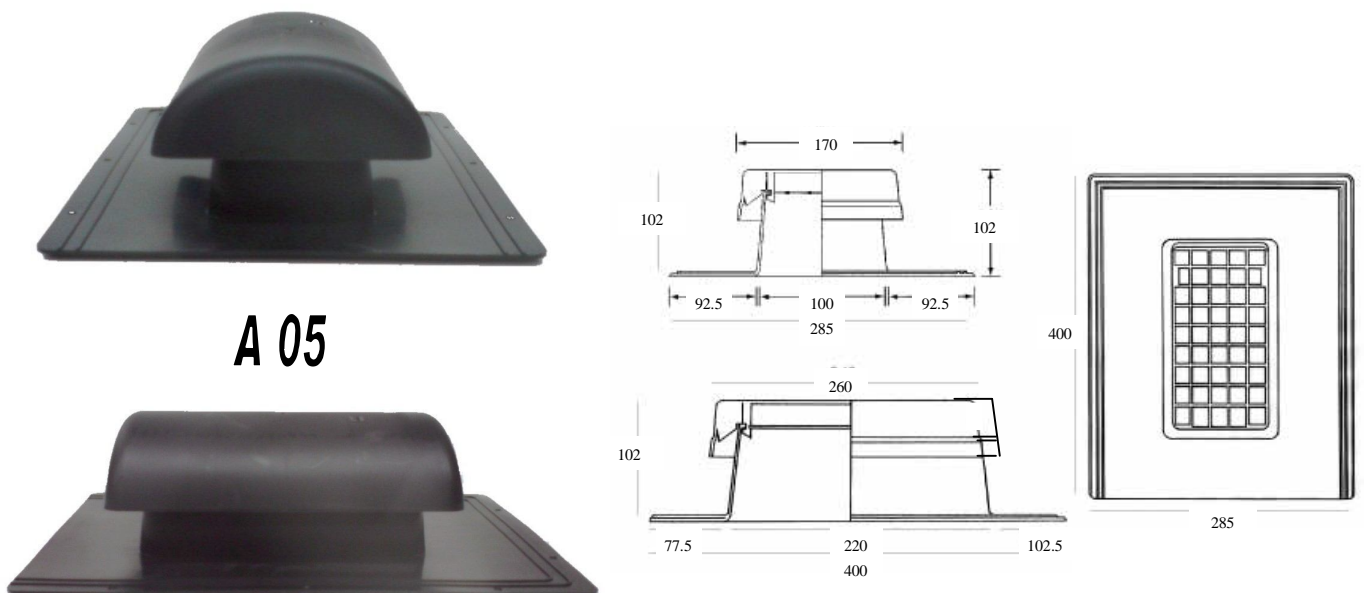


Low Air Vents

Very popular air vent as they blend in with the roof and only sit-up 102mm.

We carry them in stock.

Propose to release a better larger (volume) low air vent.

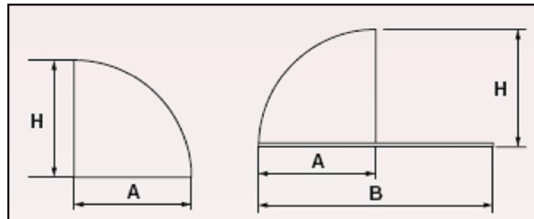


Corners & Coves

Corners for Torch-on Membranes



C 01

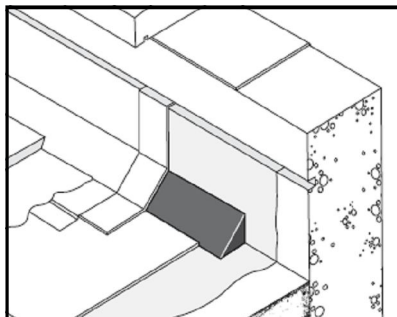


C 02

Code	Type	A	B	H	Per Carton
C 01	Internal Corner 90°	95		95	200
C 02	External Corner 270°	95	175	100	100

Hitchins recommends these corners to revive a suspect area.

Profili Angle Fillets (C 03)



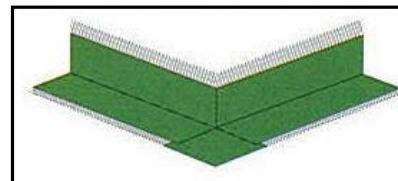
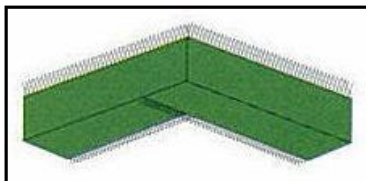
C 03



Preformed Bituminous triangle fillets, easy to install, mouldable around any shape, compatible with SBS and APP waterproofing membranes, sold in 15 metre rolls, size 25mm

Coverband Corners (C 04 & C 05)

C 04



C 05

These corners are pre-moulded and vulcanised, to be used in conjunction with *Coverband* rolls which are 120mm wide by 50metres long. Installed with *Covercol AB Rapid*, *Traffigard*, *CIM* or *Tufflex*, package 25 items per Carton.

Pipe Sealing



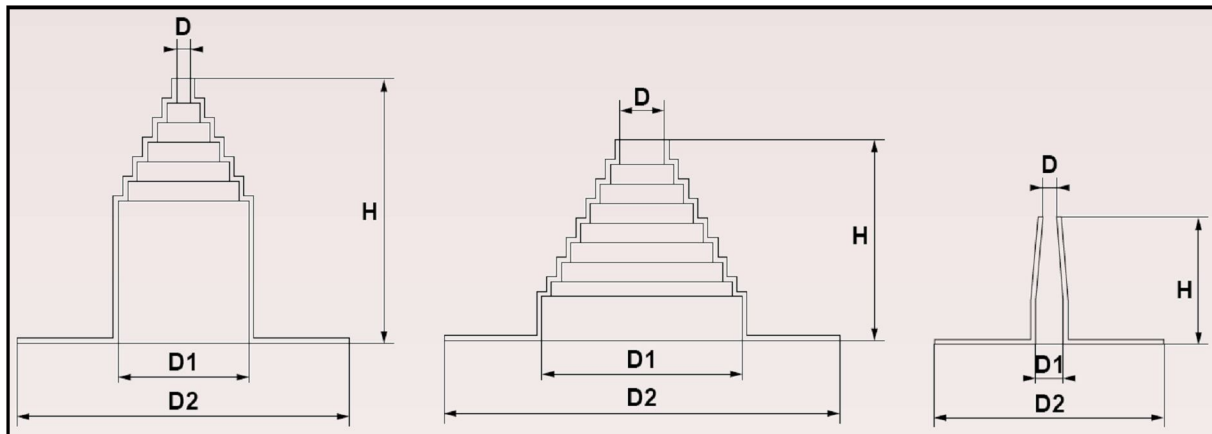
C 06



C 07



C 08



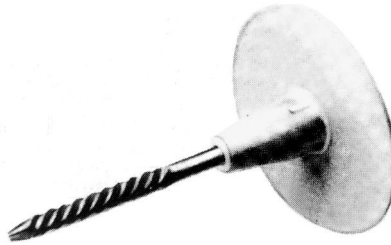
Code	Type	D	D1	D2	H	Per Carton
C 06	EPDM Rubber	15	130	330	250	15
C 07	TPE	40	175	395	190	15
C 08	TPE	15	30	210	120	50



Hitchins New Zealand Limited recommends these and other conical pipe sealing units to provide and improve weather protection.

Wall Fasteners

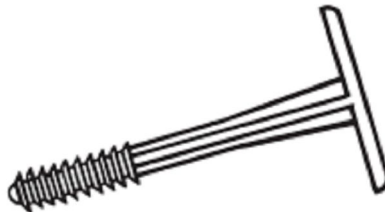
Polypropylene Headed Nails



F 04 F 05 F 06

Code	Dimensions	Per Carton
F 04 50	Nail mm, 50 Ø - head Ø 50	300
F 04 60	Nail mm, 60 Ø - head Ø 50	300
F 05 70	Nail mm, 70 Ø - head Ø 50	300
F 05 80	Nail mm, 80 Ø - head Ø 50	300
F 05 90	Nail mm, 90 Ø - head Ø 50	300
F 06 100	Nail mm, 100 Ø - head Ø 50	300
F 06 120	Nail mm, 120 Ø - head Ø 50	300

Quick Fit Expansion Fasteners



F 07 F 08

Code	Dimensions	Per Carton
F 07 50	Length mm, 50 - hole Ø 8 - ins Thickness mm. 10 ÷ 20 - head Ø 38	300
F 07 70	Length mm, 70 - hole Ø 8 - ins Thickness mm. 20 ÷ 40 - head Ø 38	300
F 08 90	Length mm, 90 - hole Ø 8 - ins Thickness mm. 40 ÷ 60 - head Ø 38	300
F 08 110	Length mm, 110 - hole Ø 8 - ins Thickness mm. 70 ÷ 80 - head Ø 38	300

Galvanised Washer Fasteners



F 01



F 02



F 03

They are used for the laying of insulating boards, for mechanical fixing of bituminous and synthetic waterproof roofing in PVC, TPO and PE.

Code	Dimensions	Per Carton
F 01	Head Ø 70 mm, Hole 5mm	100
F 02	Head 64x64 mm, Hole 6mm	300
F 03	Head 82x40 mm, hole 5,5mm	200

Plastic Washer Fasteners

Use with 75mm galvanise flat head nail for fixing 30 & 40mm foam sheets. Available in 500 and 100 pce Bags.

F 09



RDA122012

Rainheads

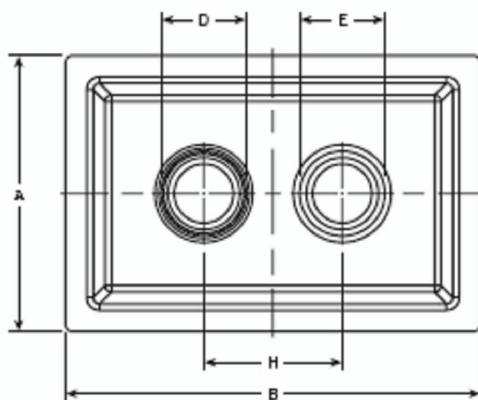
Hitchins Code BS 01 A BS 01 B BS 01 C

Rainhead Dimensions	IMR100	IMR120	IMR130
A Overall Width	300	300	380
B Overall Length	450	450	580
C Depth	164	200	275
D Overflow Ø	75/100	100/150	150/200
E Main Outlet Ø	75/100	100/150	150/200
F Outlet Pipe Length	140	140	140
G Outlet Pipe Length	60	60	60
H Outlet Position	150	170	250
I Flange Width	30	30	30
J Flange Thickness	4	4	4
K Overflow Spigot Ø	98	145	195
L Overflow Spigot	208	240	270

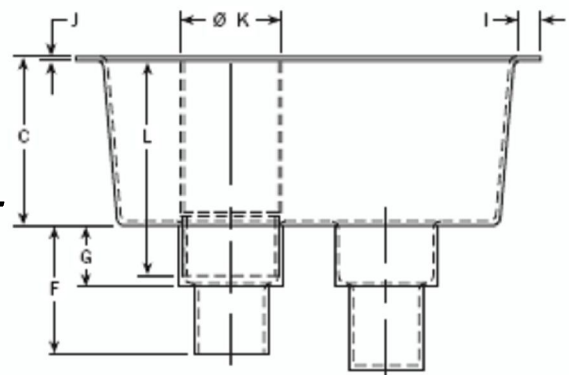


BS 02

Internal In Gutters



BS 01
A, B & C.

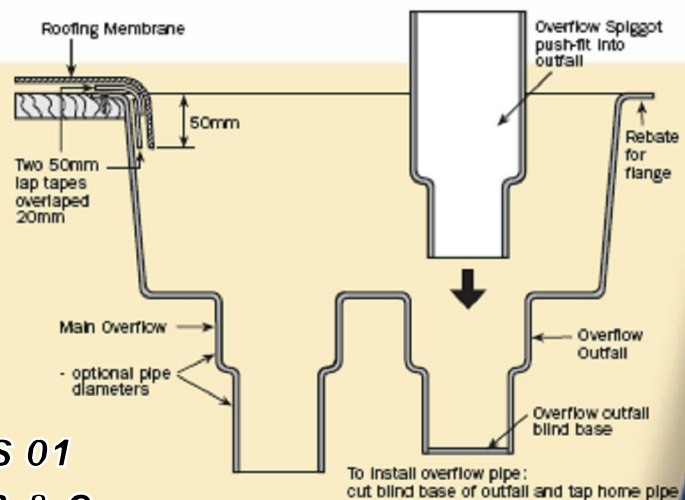


Roofing Membrane detailing

Lap the roofing membrane 50mm into the Rainhead over two layers as shown opposite.



BS 01
A, B & C.





Suppliers of a wide range of roof and deck accessories.

This catalogue & price list will be added to, as to provide the most comprehensive range possible.

We also provide paver support and adjustable jacks, covered in the following section.

Hitchins will also be marketing a range of deck panels.

Finally we market the most advanced technological gas torches.

7 Masfield Street, P O Box 40-749
Upper Hutt 5140, Wellington, New Zealand.
Ph : 64-4 527 7248, Fax : 64-4 528 4813

300 Richmond Road, PO Box 46-018
Herne Bay 1147, Auckland, New Zealand.
Ph :64-9 360 3246 Fx: 64-9 360 5081

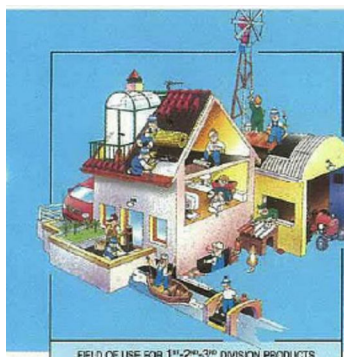
office@hitchins.co.nz

www.hitchins.co.nz

HITCHINS NEW ZEALAND LIMITED

RDA122012

Page 15



FIELD OF USE FOR 1st/2nd-3rd DIVISION PRODUCTS

HELASTORING

SUPPORT FOR PREFABRICATED FLOORS

PROBLEM

The flooring of terraces suitable for pedestrian use, laid directly over the waterproof coat can cause considerable inconvenience.

In the daytime, the floor expands when heated by the sun's rays, whereas, at night, when radiation stops, the floor cools and therefore contracts.

These alternating movements, focused along the floor's expansion joints, are transmitted to the waterproof coat underneath, damaging it by fatigue.

To eliminate this inconvenience, the floor must be insulated from the waterproof material underneath.

SOLUTION

HELASTORING is a plastic support for prefabricated cement squares.

With **HELASTORING**, the floor does not touch the waterproof coat, but is separated from it by an interspace and, therefore, can expand without compromising the consistency of the coat.

FIELDS OF USE

HELASTORING was designed for laying exclusively on multi-layer bituminous waterproof material, and on bituminous sheaths.

By using the **HELASTORING** waterproofing

ring, secure terraces can be built, that do not allow water to pass through. The floor is completely prefabricated, is applied dry, does not require any mortar, can be laid in any season, does not require specialised labour, and has no joints, because they are included in the **HELASTORING** support.

The slabs need only be rested over. If the waterproof coat has to be repaired, there is no need to demolish the floor - you just lift up a few squares to carry out maintenance.

No more puddles!: rainwater flows directly to the drains between the open joints of the squares.

PRECAUTIONS AND METHOD OF USE

HELASTORING is simply laid dry on the waterproof material. Procedure for applying the squares over the **HELASTORING** supports: lay the slabs on the four corners of the ring and push them against the spacers. When the first row has been laid to measure, the next row will, as a result, be correctly aligned.

HELASTORING is designed for easy division into fractions:

- use a half-ring for the row of slabs adjacent to the perimeter wall;
- for the corner square, use the quarter-ring;
- to rest three slabs adjoining an external angle, use the three-quarter ring.

The levelling disk is a **HELASTORING** accessory which is applied as a wedge to stabilise the squares that are not sufficiently flat or when the laying surface is uneven.

The disk is usually used in quarter sections and is fitted between **HELASTORING** and the edge of the shaky slab.

In terraces whose dimensions are an exact multiple of the slab size, the row adjoining the perimeter wall must be cut. In the case of small sizes, the gap between floor and relief can be filled with fine gravel. The drain holes should be laid at the waterproofing height and should be supplied with a flat leaf guard grille.

Do not stucco the joints between the squares, but leave them free to help the water flow out quickly.

If the flooring is laid over heat insulation material, use insulating material with compression resistance of over 2 kg/cm².



DIMENSIONS



HELASTORING	
Thickness mm	External ø mm
14	154

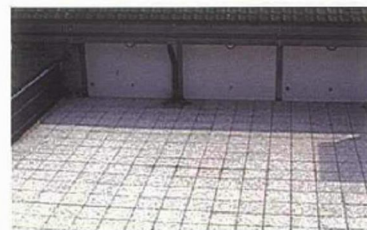


LEVELLER	
Thickness mm	External ø mm
2,9	154

QUANTITY OF SUPPORTS

- 50x50 cm squares
- 40x40 cm squares

No. 4,00/m²
No. 6,25/m²



• FOR ANY FURTHER INFORMATION OR ADVICE ON PARTICULAR APPLICATIONS, CONTACT OUR TECHNICAL OFFICE
• IN ORDER TO CORRECTLY USE OUR PRODUCTS, REFER TO INDEX TECHNICAL SPECIFICATIONS

index
Construction Systems and Products

Via G. Rossini, 22 - 37060 Castel D'Azzano (VR) - Italy - C.P.67 - Tel. (+39)045.8546201 - Fax (+39)045.518390

INTERNET: www.index-spa.com
E-MAIL: index.export@index-spa.it



UNI EN ISO 9001
ed. 2000 - Vision



UNI EN ISO 14001



© INDEX S.p.A.



• **Support Rings and Spacers**



CW\inword\Dataspecs\INDEX Helastorings 3 August 2006/fas

Purpose and use	INDEX Helastorings are designed to support concrete pavers on each corner of the paver. The Helastorings can be snapped into two halves for commencing the laying against the wall or in quarters for commencing out of a corner. They can be used to support timber framework over-sheathed in timber slats as a decking or catwalk panels. Depending upon the weight of the structure and the intended use, place on Helastoring at 600mm centres, both ways.
Helastoring Spacers purpose and use	To provide additional support where required. To cater for substrate irregularities to ensure pavers are level and firm. To cater for substrate falls at 3mm increments over the length of the paving slab.
Plan layout; calculate quantities on flat substrate	On opposite side of pamphlet we provide the quantities of supports for two sizes of pavers. For other sizes, multiply length by width and divide into 1.0 m ² which will advise the number of Helastorings required per m ² .
Helastoring stacking	Helastorings are designed to be used one high and with Helastorings Spacers (up to 3) to provide additional support and to level pavers where undulations or slight falls within the substrate. Stacking of Helastorings on top of each other will require one Helastoring Spacer between each Helastoring. Do not exceed 4 Helastorings stacking. Hitchins New Zealand Limited can provide stronger adjustable paver supports for high variations above 35mm to 100mm.
Additional supports	Depending upon the degree of slope, size and weight of pavers and stacking of Helastorings, Hitchins recommends a plastic bag part filled with runny concrete and sealed, be placed in the centre of each paver.
Plan layout calculate quantities slopping substrates	Installers are advised to use a 2 metre (minimum) metal straightedge and a level to calculate the fall in the substrate and what is required to level the pavers. This will enable you to calculate the height at each paver and what number of Helastorings and Spacers are required at that point. The responsibility for calculating quantities is the tendered or layer of the pavers.
Adjustable paver supports	Hitchins can provide adjustable paver supports. Please enquire on this range, availability and cost.

7 Masfield Street, P O Box 40-749
Upper Hutt 5140, Wellington, New Zealand.
Ph : 64-4 527 7248, Fax : 64-4 528 4813

300 Richmond Road, PO Box 46-018
Herne Bay 1147, Auckland, New Zealand.
Ph :64-9 360 3246 Fx: 64-9 360 5081

office@hitchins.co.nz

www.hitchins.co.nz

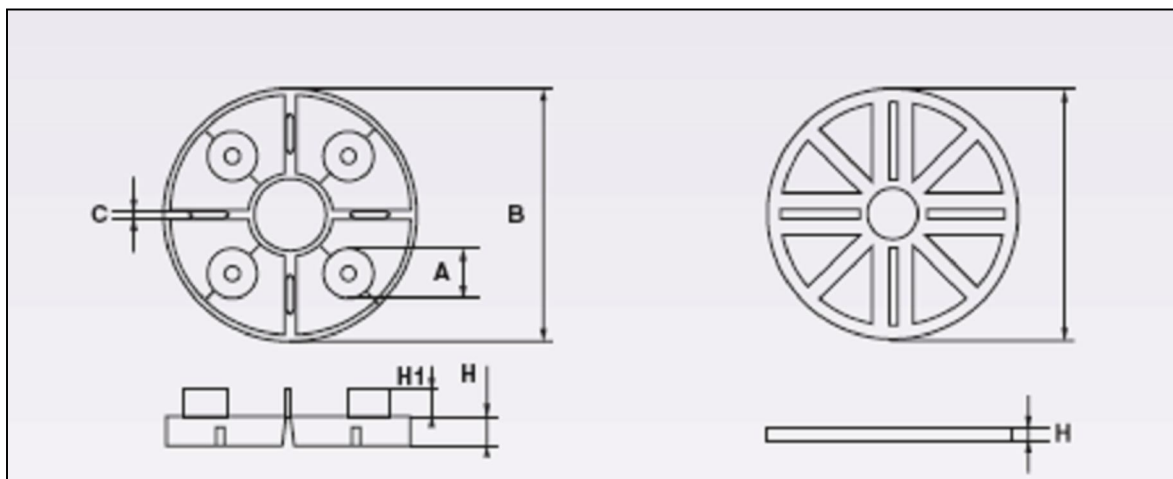
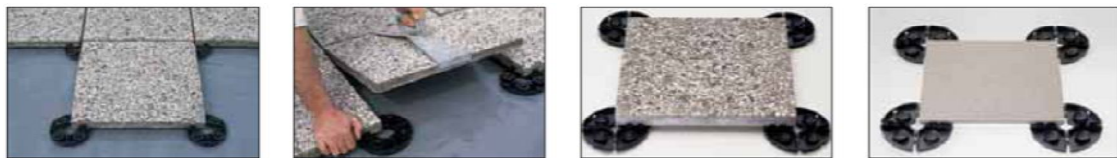
HITCHINS NEW ZEALAND LIMITED

RDA122012

Fixed Paving Supports



These paving pedestals are available in a range of heights, being 12mm, 15mm and 20mm. They can be used to accommodate slight falls, by starting with 12mm and using the higher ones where required. They can be stack onto each other (up to 3 only) to cater for various height required. The PS 06 ring can also be used as a leveller and recommended to be used between pedestals when multi-stacking. Finally the balancers can be used to reduce paving rocking.



Code	A	B	C	H	H1	Per CTN
PS 03	30	150	3	12	11	250
PS 04	30	140	3	15	12	200
PS 05	30	150	4	20	18	150
PS 06				5		200
PS 07		150		3		250

Eterno 'MAXI' Paving Supports - Adjustable Jacks



M1
35 - 50 mm

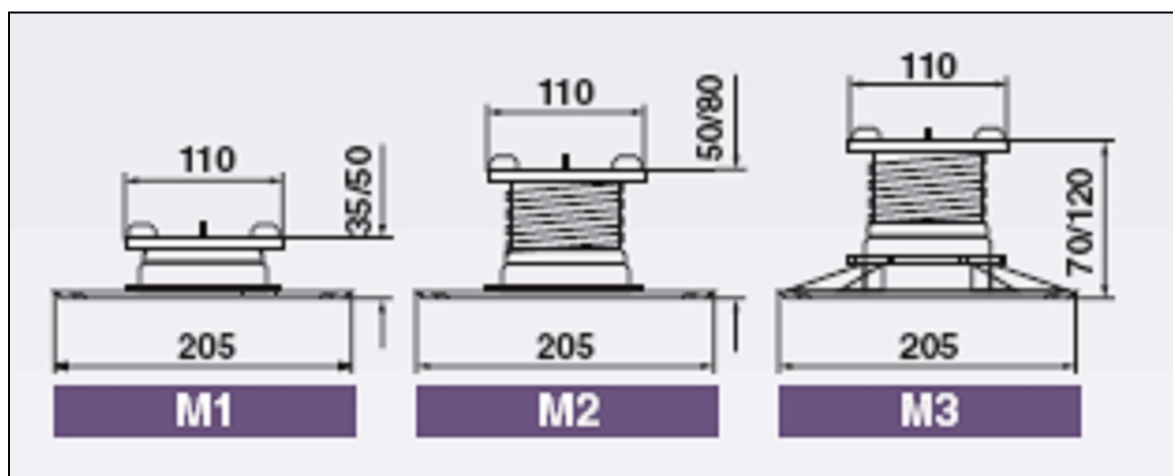
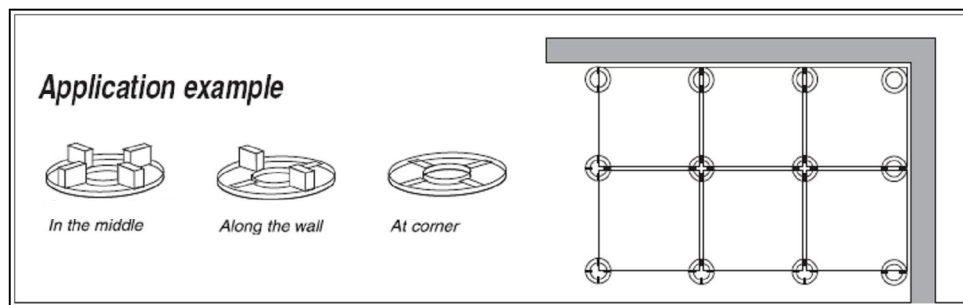


M2
50- 80 mm



M3
70 - 120 mm

Code	Size	Per Carton	Paving slab size	Pieces per m ²
M 01	35-50 mm	60	cm 60 x 60	2-3 pcs
M 02	50-80 mm	70	cm 50 x 50	4-5 pcs
M 03	70-120 mm	50	cm 40 x 40	6-7 pcs
			Base support cm ²	305

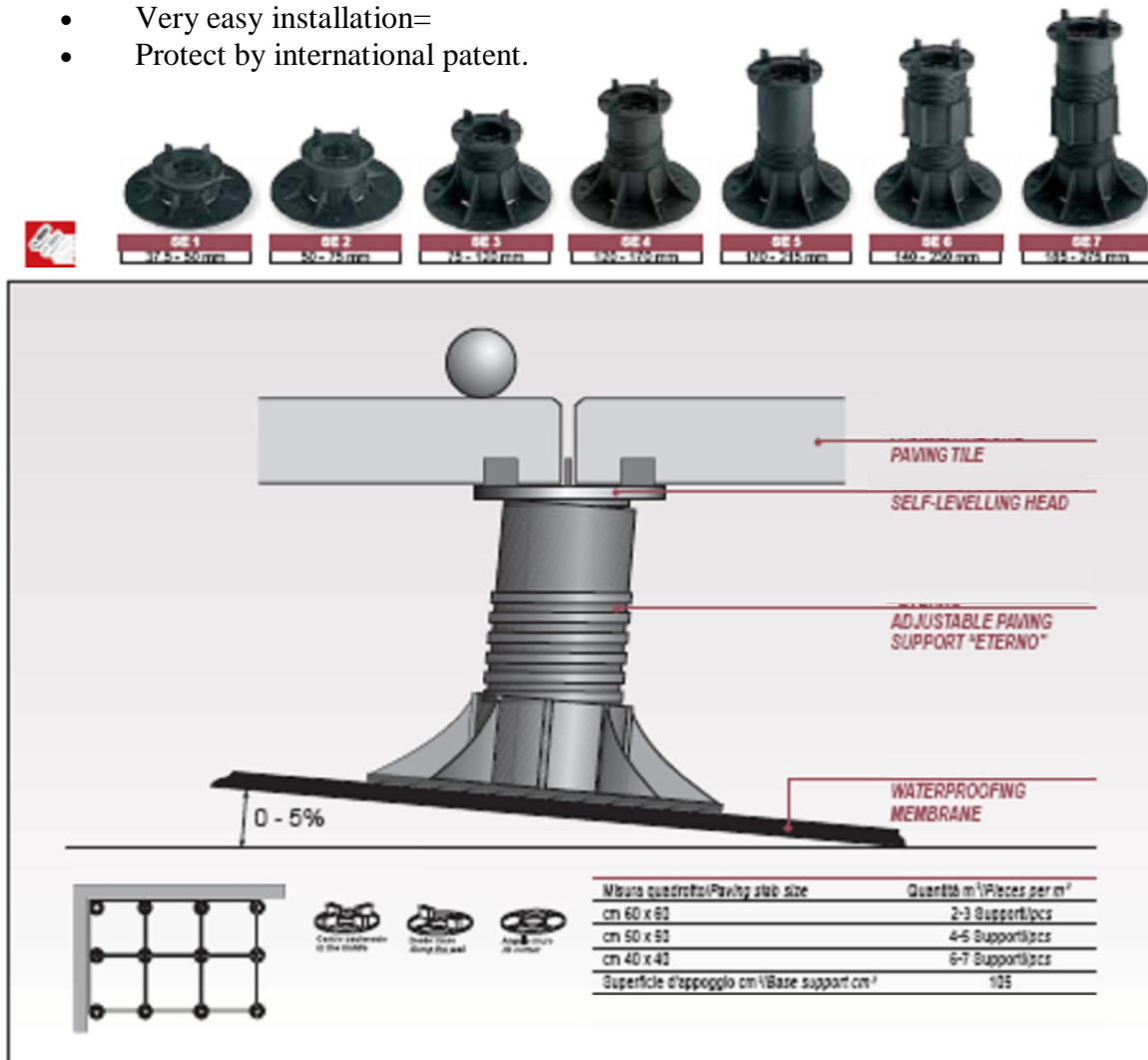


Adjustable Jack Paving & Panel Support

ADJUSTABLE PAVING SUPPORT “ETERNO” WITH SELF-LEVELING HEAD

ADVANTAGES

- Self-leveling head that automatically justify slopes of 5% max.
- Adjustable height from 37.5 to 550 mm
- Possibility to control the height once the pavement is finished thanks to the exclusive “regulation key”.
- 320 cm² base support
- Entirely recyclable.
- Resistant to temperatures between -30° a $+120^{\circ}\text{C}$.
- Resistant to acids.
- Resistant to ultraviolet deterioration
- Very easy installation=
- Protect by international patent.

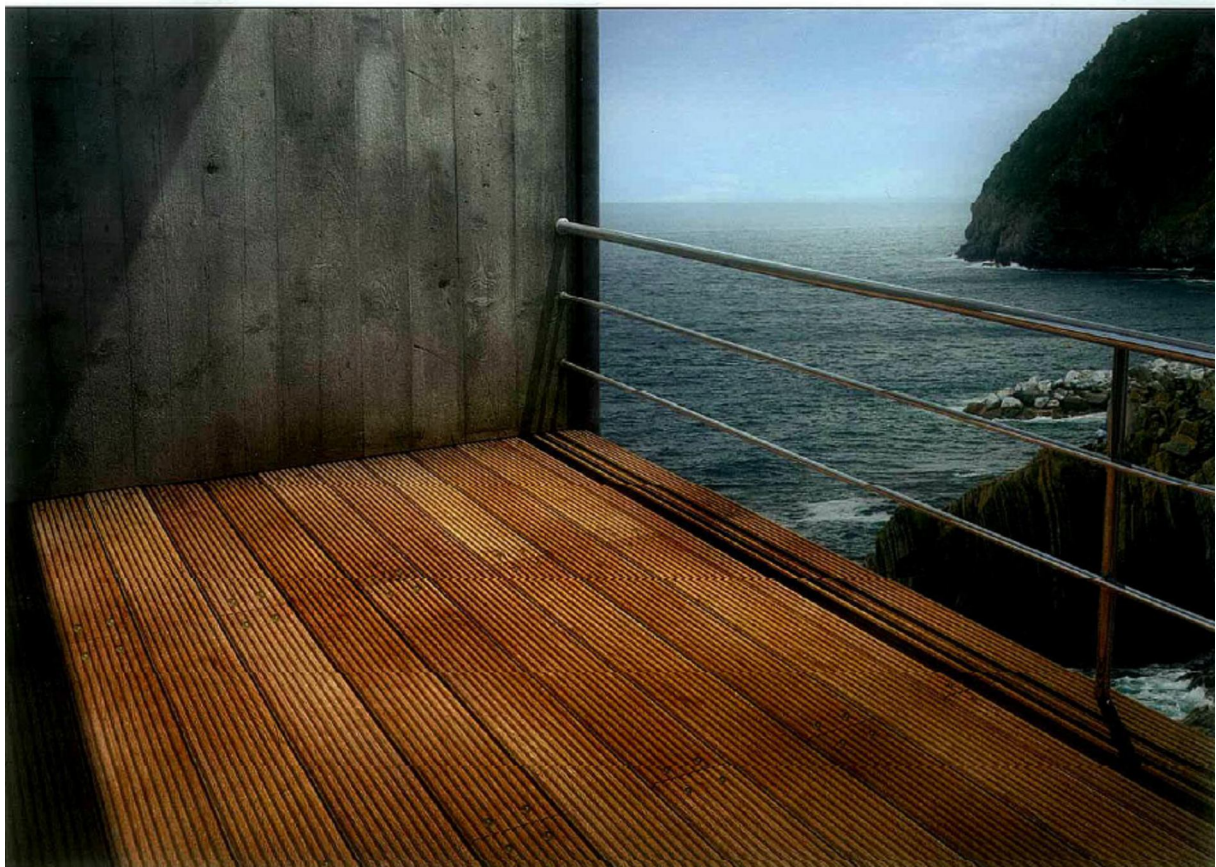


Hitchins New Zealand Ltd carry a full range of these Adjustable Jacks for pavers, deck panels or duckboarding systems.



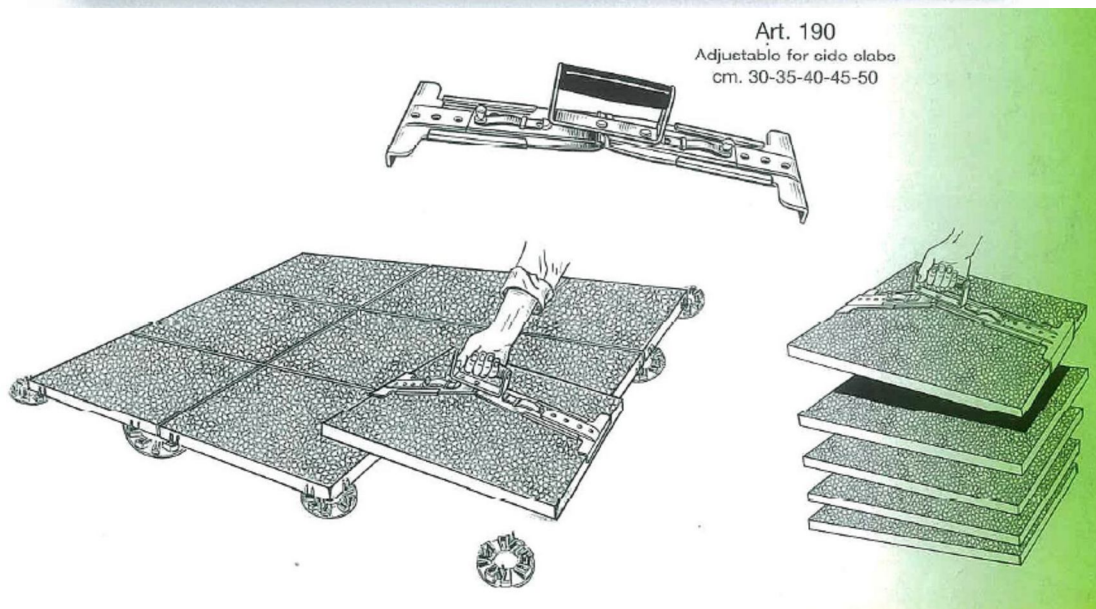
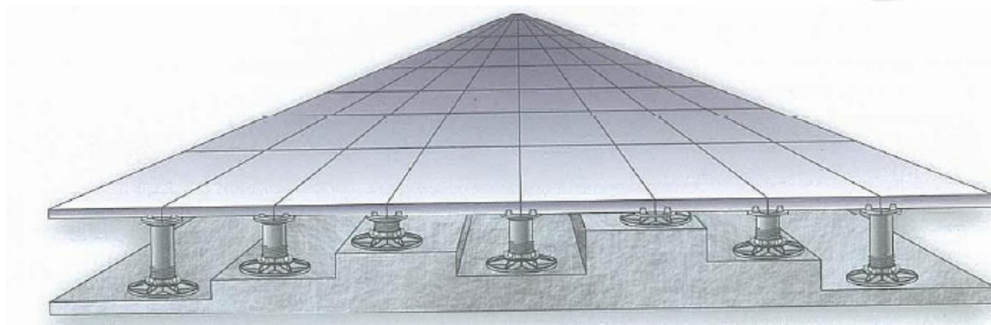
Code	Size	Per Carton	Code	Size	Per Carton
SE 1	37.5 - 50	40	B 1	Base SE1 / SE1 Base	40
SE 2	50-75	40	B 2	Base SE2 / SE2 Base	40
SE 3	75-120	40	B 3	Base SE3-SE14 / SE3-SE14 Base	40
SE 4	120-170	40	V 1	V1 threaded Support	40
SE 5	170-215	40	V 2	V2 threaded Support	40
SE 6	140-230	40	V 3	V3 threaded Support	40
SE 7	185-275	40	V 4	V4 threaded Support	40
SE 8	235-325	40	V 5	V5 threaded Support	40
SE 9	205-345	40	TF 4	Fixed head	80
SE 10	250-385	40	T 4	Self-levelling head	80
SE 11	300-400	40	P 1	Extension element	40
SE 12	270-455	40	AK 01	Regulation key	1
SE 13	315-500	40	PS 06	LH3 Levelling disc	250
SE 14	365-550	40			

The components of these units can be purchased separately from Hitchins New Zealand Ltd.



Wooden Decks or Wood Deck Tiles

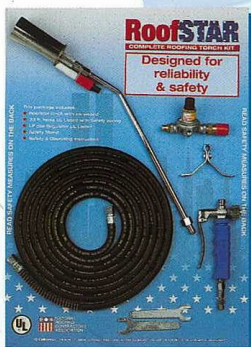
The natural beauty of wood laid on pavers or adjustable jacks to provide drainage



ROOFSTAR 2

Torch Kits

ROOFSTAR 2 TORCH KIT INTERCHANGEABLE



LONG STANDARD FIELD TORCH KIT

Ideal for your stand-up work

Kit includes:

- ROOFSTAR 2 Torch handle with swivel hose end, 15' lance, 2" bell head, 260,000 BTU
- UL Listed 33 ft. L P gas hose with safety spring
- UL Listed L P gas regulator (adjustable)
- Safety stand and 2 assembly keys

Code KR-1538 A

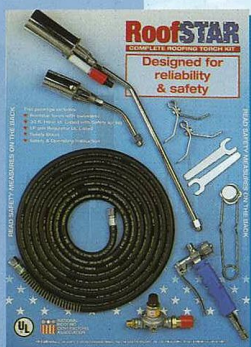
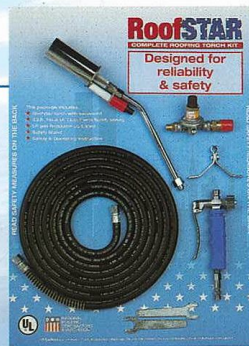
SHORT STANDARD FIELD TORCH KIT

For your standard multi-use application

Kit includes:

- ROOFSTAR 2 Torch handle with swivel hose end, 9' lance, 2" bell head, 260,000 BTU
- UL Listed 33 ft. L P gas hose with safety spring
- UL Listed L P gas regulator (adjustable)
- Safety stand and 2 assembly keys

Code KR-1522 A



COMBINATION DETAIL AND FIELD TORCH KIT

This is our most popular with roofers since it combines the benefits of both the detail and field kits

Kit includes:

- ROOFSTAR 2 Torch handle with swivel hose end, 15' lance, 2" bell head, 260,000 BTU and 5' lance, 1.6" bell head, 120,000 BTU
- UL Listed 33 ft. L P gas hose with safety spring
- UL Listed L P gas regulator (adjustable)
- Safety stand and 2 assembly keys

Code KR-1C A

and flint spark lighter

STANDARD DOUBLE BURNER TORCH KIT

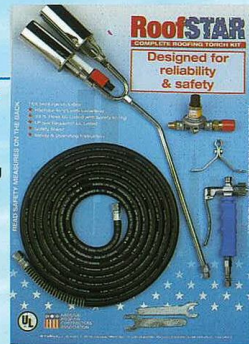
The double burner allows you to handle those special applications that require wider flame coverage and additional heat output

Kit includes:

- ROOFSTAR 2 Torch handle with swivel hose end, 15' lance, 2" double bell head, 385,000 BTU
- UL Listed 33 ft. L P gas hose with safety spring
- UL Listed L P gas regulator (adjustable)
- Safety stand and 2 assembly keys

Code 1014-DA

ALSO AVAILABLE WITH LANCE OF 19" OR 24"

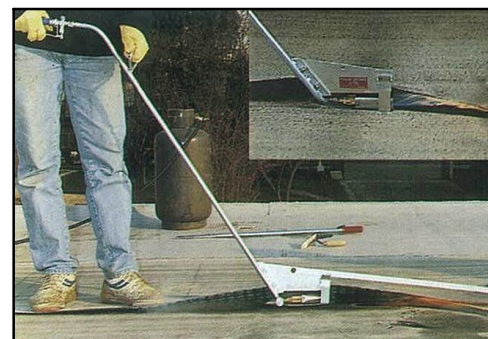
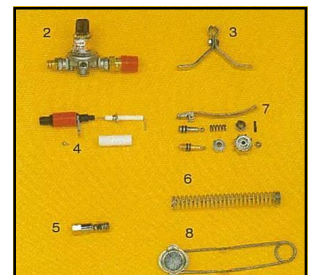
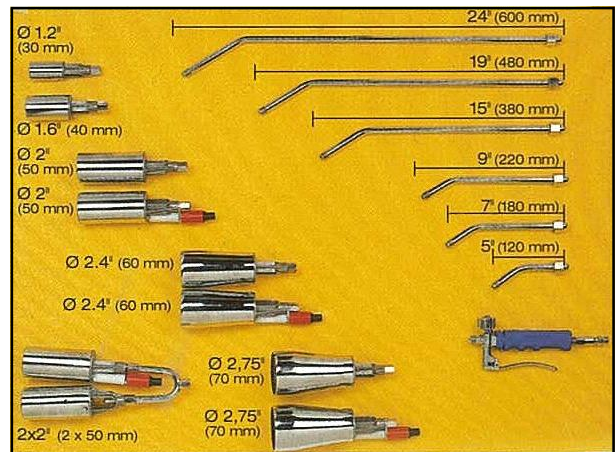


ROOFSTAR 2

Interchangeable Parts

HITCHINS NEW ZEALAND LIMITED is now stocking Torch kits, accessories and parts. All are inter-changeable so that you can assemble a torch kit to suit your requirements. Plus we stocks parts for repairs:-

REPLACEMENT PARTS & ACCESSORIES	CODE
TORCH HANDLE WITH SWIVEL HOSE END	IRI G
LANCE (STEMS)	
120mm (5 inch)	LR - 112
180mm (7 inch)	LR - 118
220mm (9 inch)	LR - 122
380mm (15 inch)	LR - 138
480mm (19 inch)	LR - 148
600mm (24 inch)	LR - 160
TORCH BELL HEADS	
30mm (1.2inch)	1014 - 3
40mm (1.6 inch)	1014 - 4
50mm (2 inch)	1014 - 5A
60mm (2.4 inch)	1014 - 6A
70mm (2.7 inch)	1014 - 7A
(1) HOSE & ASSEMBLY WITH SAFETY SPRING 30mm (33ft) Hose	1012 - RFN
(2) PRESSURE REGULATOR Adjustable Safety Valve, New Zealand fitting	1030 - VH
(3) SAFETY STAND KIT Allows for free-standing use	1011 - PP
(4) PEIZO-ELECTRIC IGNITION Safe self lighting unit	1014 - AP
(5) SWIVEL CONNECTION Prevents Hose twisting	1011-AG
(6) SAFETY SPRINGS Prevents fracturing of Hose	1011 - MT
(7) REPLACEMENT FLOW VALVE KIT Maintenance Kit for Torch Handle	1011 - PK
(8) FLINT SPARK LIGHTER For lighting of Gas Torch Bell Head. Not required for Piezo-Electric Ignition	1011-FL
TROWELS Small Round Nose Trowel	7050 BRTS
LEATHER GLOVES Safety protection wear	7060
OVERLAP JOINT WEILDING TORCH UNIT The complete kit for fast application	1016 JSTK





7 Masfield Street, P O Box 40-749
Upper Hutt 5140, Wellington, New Zealand.
Ph : 64-4 527 7248, Fax : 64-4 528 4813

office@hitchins.co.nz

300 Richmond Road, PO Box 46-018
Herne Bay 1147, Auckland, New Zealand.
Ph :64-9 360 3246 Fx: 64-9 360 5081

www.hitchins.co.nz